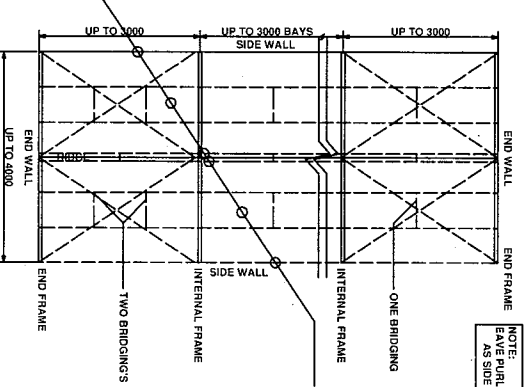


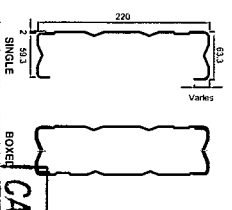
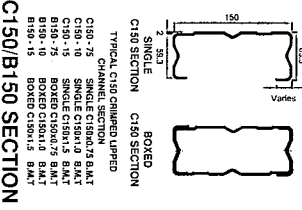
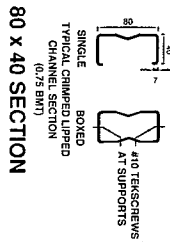
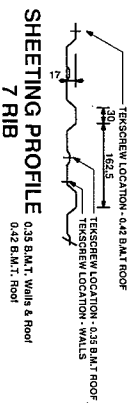
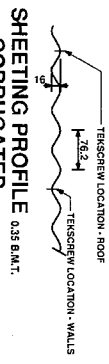
**TYPICAL WALL ELEVATIONS (DELETE NON APPLICABLE ELEVATIONS) 1:1-100**  
REFER TO BRACING FOR BRACING REQUIREMENTS.



NOTE:  
PURLINS ALSO ACT AS SIDE WALL GIRTS

| Height | Purlins C2  |
|--------|-------------|
| 2.4m   | T.C.3 Urban |
| 3.0m   | CR040 (3)   |
| 3.6m   | BR040 (3)   |
| 4.2m   | BR040 (1)   |
| 4.8m   | BR040 (1)   |

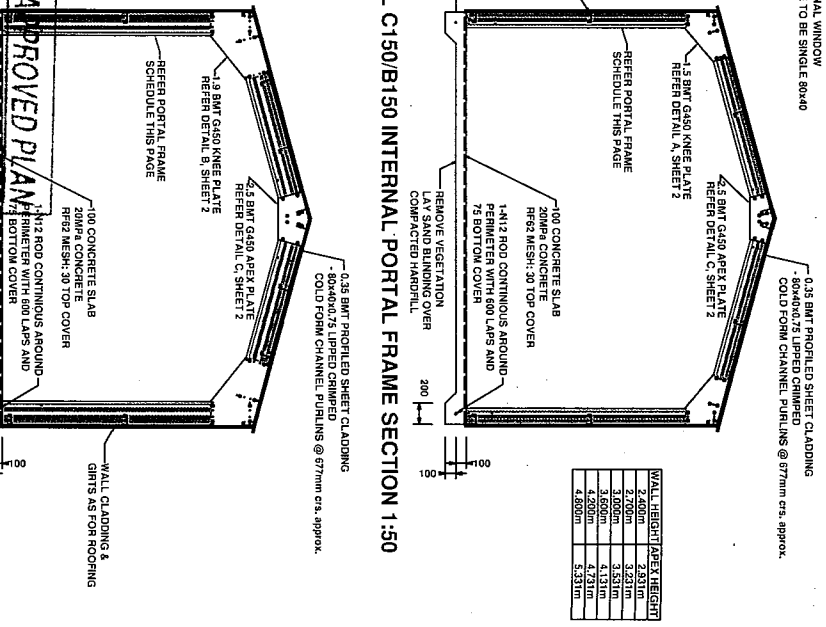
Single purlins spaced @ 75  
Board purlins spaced @ 75  
One Choked bridge at midspan  
Type Choked bridge at equal distance



**PORTAL FRAME SCHEDULE**

| EAVE HEIGHT | PORTAL C2 T.C.3 URBAN | INTERNAL: |
|-------------|-----------------------|-----------|
| 2.4mH       | C150 - 75             | C150 - 10 |
| 2.7mH       | C150 - 75             | C150 - 15 |
| 3.0mH       | C150 - 75             | C150 - 15 |
| 3.6mH       | C150 - 75             | C150 - 15 |
| 4.2mH       | C150 - 10             | C150 - 10 |

**TYPICAL C150/B150 INTERNAL PORTAL FRAME SECTION 1:50**



**WALL HEIGHT/APEX HEIGHT**

|        |        |
|--------|--------|
| 2.400m | 2.931m |
| 2.700m | 3.231m |
| 3.000m | 3.531m |
| 3.600m | 4.131m |
| 4.200m | 4.731m |
| 4.800m | 5.331m |

**CAIRNS REGIONAL COUNCIL APPROVED PLAN**  
ALL BUILDING WORK IS TO BE BUILT IN ACCORDANCE WITH THE BUILDING ACT 1975 AND ANY CONDITIONS OF THE ISSUED DECISION NOTICE C220/B220 INTERNAL PORTAL FRAME SECTION 1:50

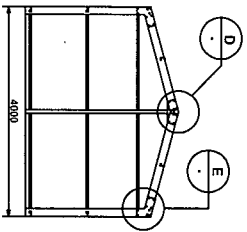
**FREDERICK R SMITH**  
Chartered Consulting Engineer  
363 Waitakei Road  
Christchurch, NZ  
Phone +64 03 348 1521

I certify that buildings erected in accordance with these drawings will comply with the Building Code of Australia.  
F R Smith  
BE (CIVIL) OPEN (AUSTR) MEMBER 124109801  
BR 53 (0225), CA (AS/NZS) EN 25353 (V10)

**VERSATILE BUILDINGS (AUSTRALIA) PTY LTD**  
74 Platinum St, Crestmead  
Brisbane QLD 4132  
PH: (07) 3827 8000 FAX: (07) 3803 2315

**STEEL FRAMED BUILDINGS**  
Region C T.C.3 (C2)  
REGIONAL WIND SPEED V=66 m/s

**UP TO 4.0m SPAN PORTALS**  
3.0m BAY SPACINGS  
TS3000-AUS  
DRAWINGS NO: 40/TC3/1  
REVISION 5/17/11



**END WALL FRAME**

**END WALL UPRIGHTS:**

1. END WALL UPRIGHTS TO BE FIXED ON EDGE.

**GIRT SCHEDULE:**

1. GIRTS TO BE SPACED AT 2.4M AND 3.0M WALL.
2. GIRTS TO BE SPACED AT 2.7M, 3.0M, 3.6M, 4.2M AND 4.8M WALL.
3. GIRTS 2.4M LONG ON LESS NEED NOT BE BOXED OR BRIDGED.
4. BOTTOM GIRTS DO NOT REQUIRE BOXING.

| Height | C21.C.3        |
|--------|----------------|
| 2.4m   | Single C150x75 |
| 2.7m   | Single C150x75 |
| 3.0m   | Single C150x75 |
| 3.6m   | Boxed C150x100 |
| 4.2m   | Boxed C150x75  |
| 4.8m   | Boxed C150x75  |

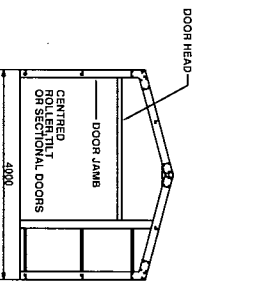
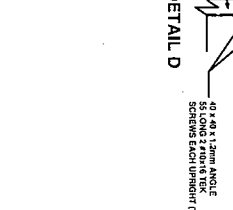
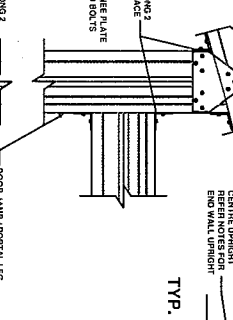
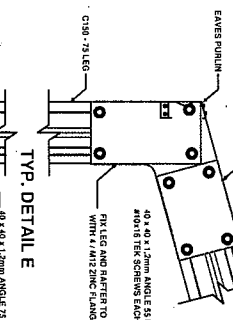
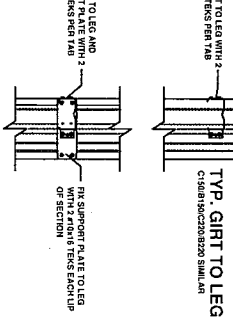
**FRONT FIT ROLLER, TILT OR SECTIONAL DOORS:**

1. DOOR OPTIONS AVAILABLE:

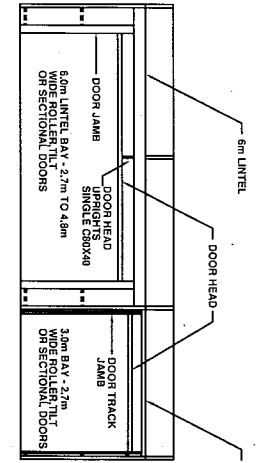
1. DOOR TYPES: SINGLE C150x75 ON FLAT OR SINGLE C230x12 ON FLAT
2. JAMB TYPES: SINGLE C150x75 ON FLAT OR SINGLE C230x12 ON FLAT

**DOOR HEADS:**

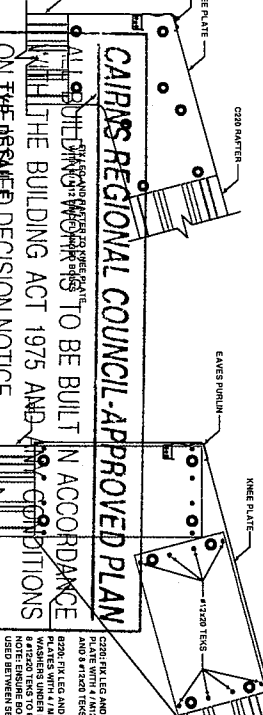
1. Up to 3.0m wide - BOXED C60x40 (SPECIAL BR00x60)
- 3.01m to 3.6m wide - BOXED C60x40 (SPECIAL BR00x60) WITH 1 UPRIGHT
- 3.61m to 4.2m wide - BOXED C150x100 ON FLAT WITH 1 UPRIGHT
- 4.21m to 4.8m wide - BOXED C150x100 ON FLAT WITH 2 UPRIGHTS



**END WALL FRAME - FRONT FIT**



**SIDE WALL FRAME - SIDE FIT**



**CAIRNS REGIONAL COUNCIL APPROVED PLAN**

**FREDERICK R SMITH**  
Chartered Consulting Engineer  
363 Waitakei Road  
Christchurch, NZ  
Phone +64 03 348 1521

certify that buildings erected in accordance with these drawings will comply with the Building Code of Australia.

**VERSATILE BUILDINGS (AUSTRALIA) Pty Ltd**  
74 Platinum St, Crestmead  
Brisbane QLD 4132  
PH: (07) 3827 8000 FAX: (07) 3803 2315

**STEEL FRAMED BUILDINGS**  
Region C T.C.3 (C2)  
REGIONAL WIND SPEED V<sub>10</sub> = 66 m/s

**UP TO 4.0m SPAN PORTALS**  
**3.0m BAY SPACINGS**

SERIES 3 VER 1.1: OCTOBER 2009

**TS3000-AUS**  
DRAWING NO. **40/TC3/2**

REVISION SHEET

CLADDING: FIX RAFTERS TO 1. KNEE PLATE WITH 4 M6 TORX COARSE BOLT  
BRIDGE: FIX RAFTERS TO 2. KNEE PLATE WITH 4 M6 TORX COARSE BOLT  
WASHERS UNDER BOLT HEAD AND NUT  
NOTE: ENSURE BOLTING SPACERS ARE USED BETWEEN SECTIONS

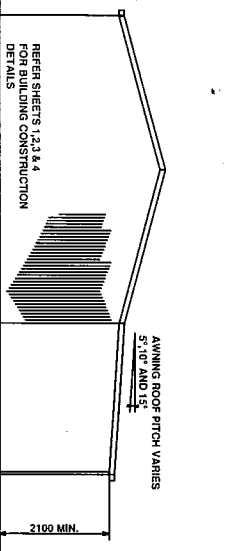
CLADDING: FIX RAFTERS TO 1. KNEE PLATE WITH 4 M6 TORX COARSE BOLT  
BRIDGE: FIX RAFTERS TO 2. KNEE PLATE WITH 4 M6 TORX COARSE BOLT  
WASHERS UNDER BOLT HEAD AND NUT  
NOTE: ENSURE BOLTING SPACERS ARE USED BETWEEN SECTIONS

CLADDING: FIX RAFTERS TO 1. KNEE PLATE WITH 4 M6 TORX COARSE BOLT  
BRIDGE: FIX RAFTERS TO 2. KNEE PLATE WITH 4 M6 TORX COARSE BOLT  
WASHERS UNDER BOLT HEAD AND NUT  
NOTE: ENSURE BOLTING SPACERS ARE USED BETWEEN SECTIONS

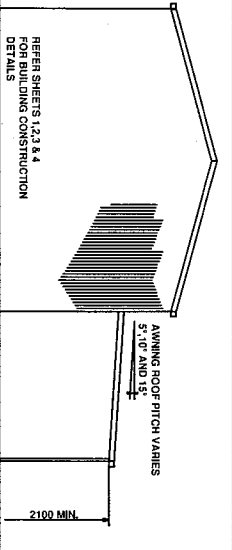
CLADDING: FIX RAFTERS TO 1. KNEE PLATE WITH 4 M6 TORX COARSE BOLT  
BRIDGE: FIX RAFTERS TO 2. KNEE PLATE WITH 4 M6 TORX COARSE BOLT  
WASHERS UNDER BOLT HEAD AND NUT  
NOTE: ENSURE BOLTING SPACERS ARE USED BETWEEN SECTIONS

CLADDING: FIX RAFTERS TO 1. KNEE PLATE WITH 4 M6 TORX COARSE BOLT  
BRIDGE: FIX RAFTERS TO 2. KNEE PLATE WITH 4 M6 TORX COARSE BOLT  
WASHERS UNDER BOLT HEAD AND NUT  
NOTE: ENSURE BOLTING SPACERS ARE USED BETWEEN SECTIONS

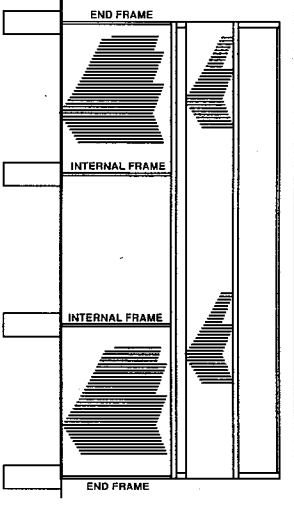




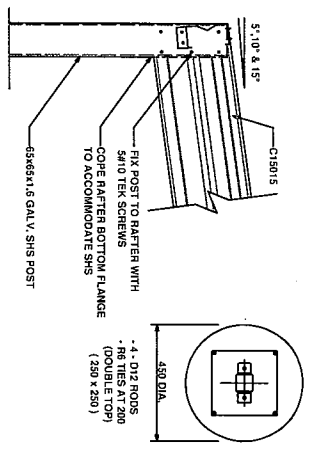
**OPTION 1 - END WALL ELEVATION 1:100**



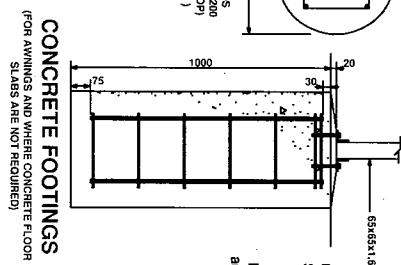
**OPTION 2 - END WALL ELEVATION 1:100**



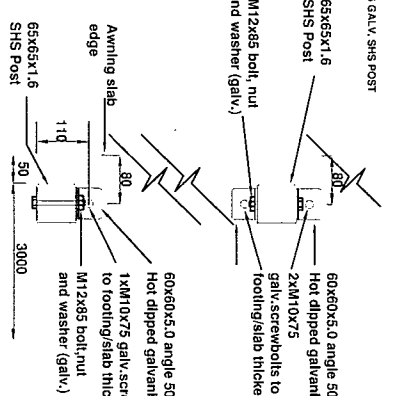
**SIDE WALL ELEVATION 1:100**



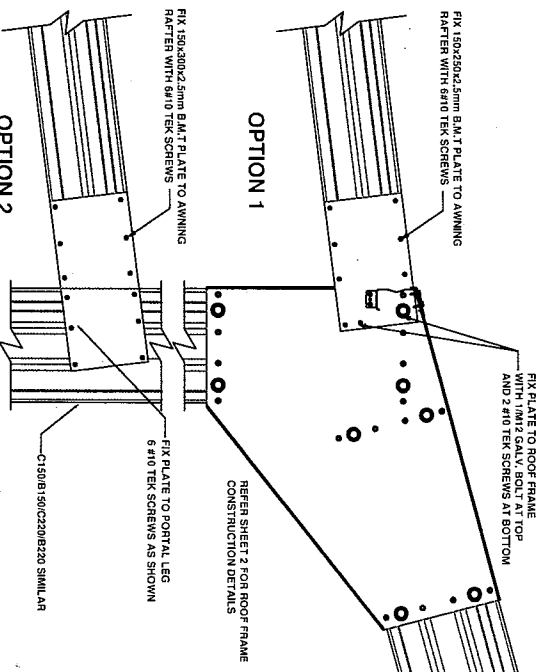
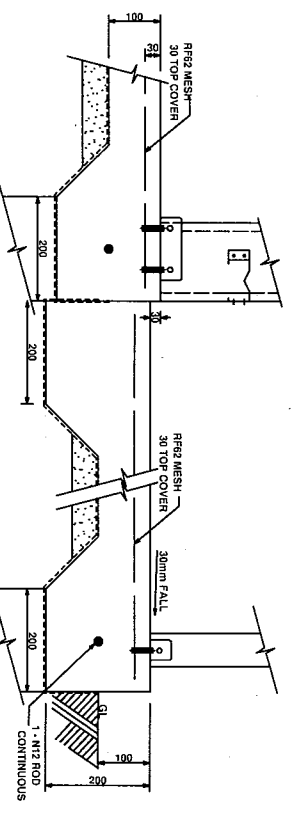
**POST CONNECTION 1:10**



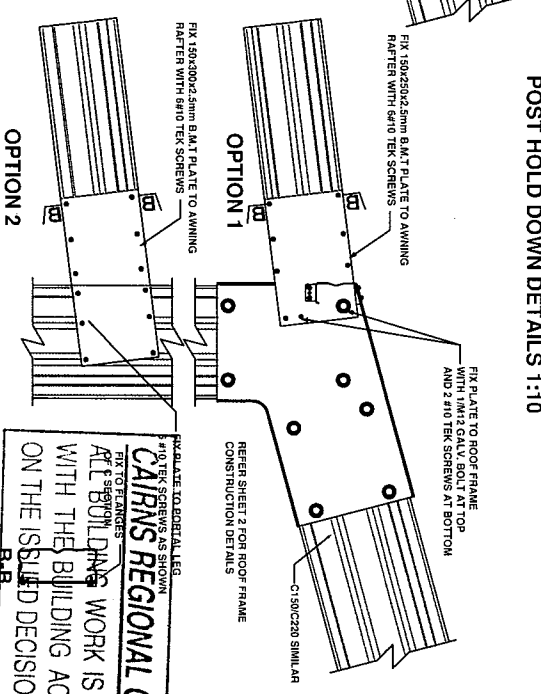
**CONCRETE FOOTINGS**  
(FOR AWNINGS AND WHERE CONCRETE FLOOR SLABS ARE NOT REQUIRED)



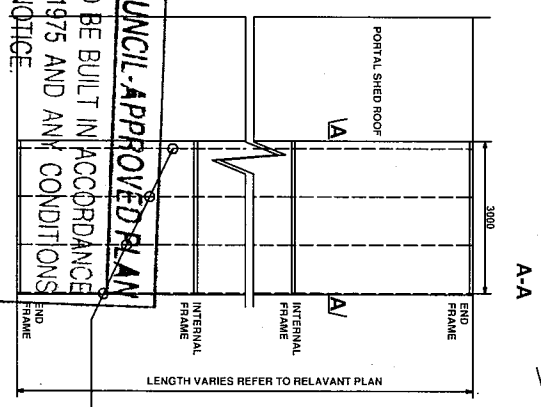
**POST HOLD DOWN DETAILS 1:10**



**INTERNAL FRAME - ROOF FRAME CONNECTION 1:10**



**END FRAME - ROOF FRAME CONNECTION 1:10**



**AWNING ROOF LAYOUT 1:100**

**CAIRNS REGIONAL COUNCIL - APPROVED PLAN**  
ALL BUILDING WORK IS TO BE BUILT IN ACCORDANCE WITH THE BUILDING ACT 1975 AND ANY CONDITIONS ON THE ISSUED DECISION NOTICE.

PURLINS AS PER SCHEDULE ON RELEVANT PLAN FIX TO RAFTERS WITH PURLINS NOTCHED 20MM RAFTER WITH 20X16 TEK SCREWS EACH FLANGE

**FREDERICK R SMITH**  
Chartered Consulting Engineer  
363 Wairakei Road  
Christchurch, NZ  
Phone +64 03 348 1521

**VERSATILE BUILDINGS**  
(AUSTRALIA) Pty Ltd  
74 Platinum St. Crestmead  
Brisbane QLD 4132  
PH: (07) 3827 8000 FAX: (07) 3803 2315

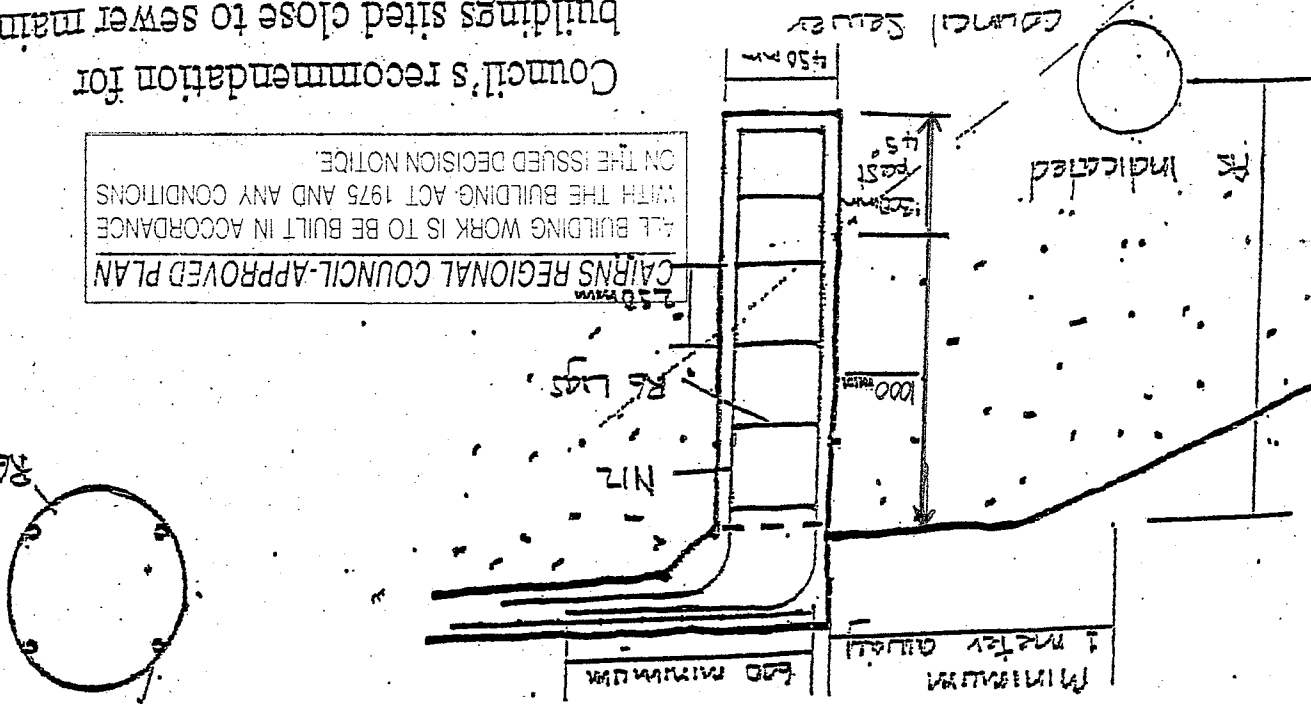
**STEEL FRAMED BUILDINGS**  
Region C T.C.2 (C2)  
Region C T.C.2.5 (C2)  
Region C T.C.3 (C2)  
REGIONAL WIND SPEED V=56 m/s

**3.5m TO 12m SPAN PORTALS**  
**3M AWNING**

SERIES 3 VER 1.1: OCTOBER 2009

TS3000-AUS  
3m Awning

Pier holes are to be 1000 mm deep and 450mm wide. Reinforced with cages made of 4 N12 deformed bars and R6 hgs @ 250mm cts. Tops of deformed bars to be returned a minimum of 600mm into main slab.



CAIRNS REGIONAL COUNCIL-APPROVED PLAN  
 ALL BUILDING WORK IS TO BE BUILT IN ACCORDANCE  
 WITH THE BUILDING ACT 1975 AND ANY CONDITIONS  
 ON THE ISSUED DECISION NOTICE.

Council's recommendation for  
 buildings sited close to sewer mains.